

McBerns Pty Ltd

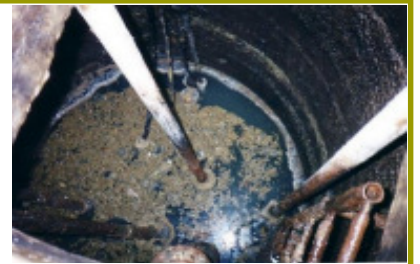
McBerns AutoWellWasher™



THE MCBERNS AUTOWELLWASHER™ WILL KEEP YOUR PUMP STATIONS *FAT FREE* FOR AS LITTLE AS 100 LITRES OF WATER PER DAY!



A common problem in pump/lift stations is heavy fatty sludge build-up on the well walls and components causing odours (customer complaints) corrosion and system failures. This results in costly callouts to sewerage overflows, cleanups and repairs and possible serious environmental breaches and heavy fines.



OUTDATED CLEANING METHODS

Traditional regular methods for cleaning fatty pump stations can be very costly, time consuming and are often dangerous, requiring confined space entry with many WPH&S requirements. These old methods also take work crews away from more important maintenance tasks.



The McBerns AutoWellWasher™ does the job automatically and effectively!

McBerns AutoWellWasher™ benefits are:

Eliminates Fat uses as little as 100 litres of water per day to keep well walls and components fat free. This is HALF the water allocation for one person per day in the SE.Qld region*.

Reduces Odours, Reduces Sulfides, improved safety for crews, less corrosion of infrastructure and increased life of the pump station.

Reduces Confined Space Entries, no more manual cleaning, improves WPH&S issues. Easily to Install no special skills are needed.

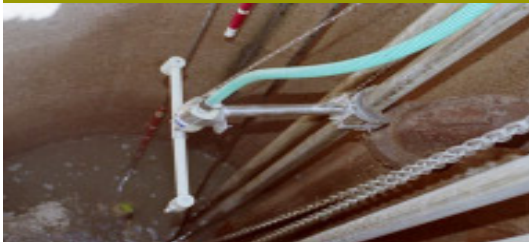
Reduces Maintenance Costs no vacuum trucks or solid waste to dispose, reduces wear & tear on pumps and hardware.

Improved Efficiency reduced callouts due to level sensor failures. Crews will be free for more urgent cost effective maintenance programs.

Cleaner & Odour Free Wells Happy consumers and a healthier environment.



Wall Mount Bracket



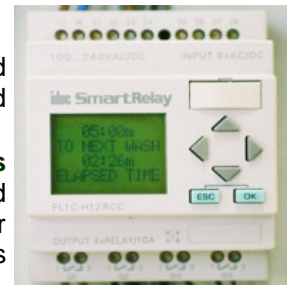
Guide Rail Bracket

2 YEAR WARRANTY

McBerns Digital Timing System (DTS)

Normally in a standard installation the Washer runs for the duration of every pump out, activated via a solenoid. Thus the cleaning process proceeds as the sewage level is dropping. The solenoid closes when the pump out is finished.

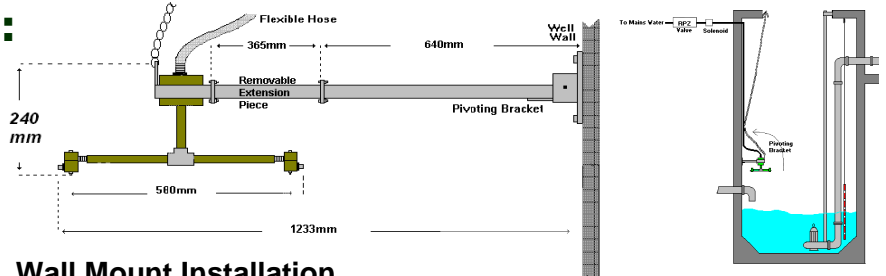
The DTS is our "water conservationist" and is designed to complement the **McBerns AutoWellWasher™**. DTS uses an Idec Smart Relay to activate the Washer during selected pump cycles, for a controlled period to maximise the effect of the Well Washer but minimise water usage. **DTS can use as little as 100 litres/day** without compromising the cleaning effectiveness of the Washer.



THE RESULT IS REDUCED WATER CONSUMPTION, ODOURS AND CORROSION, AND A FAT FREE PUMP STATION.

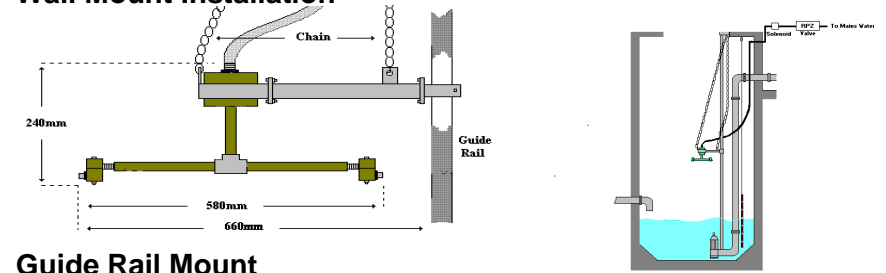
Installation Requirements:

Installation of the well washer is easy. The washer connected to mains water, via an RPZ Valve to a connector on the spray head. A solenoid valve is installed in the waterline to the washer and wired to the sewage pump control board, via our Digital Controller, if required.



Wall Mount Installation

The wall mount bracket with the spray head attached is then installed onto the well wall. Guide rail bracket is simply attached to the pump guide rail and lowered into position. All that remains for both installations is to adjust the speed of rotation and nozzle angles to achieve optimum performance.



Guide Rail Mount

Some Interesting facts about the McBerns AutoWellWasher™

●McBerns Pty Ltd launched the AutoWellWasher™ in 1991 and has been servicing the Sewerage & Wastewater industry for over 19 years. We have developed more products to help address pump station maintenance, odour management and OH&S issues. All our products provide effective and economical solutions that really work. McBerns products are widely accepted throughout the industry, both nationally and internationally. For more info about our product range visit our web site www.mcbarns.com.

●It is worth considering the **total water usage for one McBerns AutoWellWasher™** is as little as **100 litres per day** without compromising the cleaning effectiveness. This is **HALF** the average water allocation of **200 litres per person per day*** and that same pump station could be servicing up to **1000 houses** with an average of **2.5 people per house**.

●The cost of installing and running an **AWW** using 3 x 60sec washes daily is approximately is **\$3267 over 5 years** .# While **manual cleaning**, 1 wash per week would cost approximately **\$15,000 over 5 years** ##, using 2 man crew and truck. Both examples include water costs allowing for 3% CPI pa.

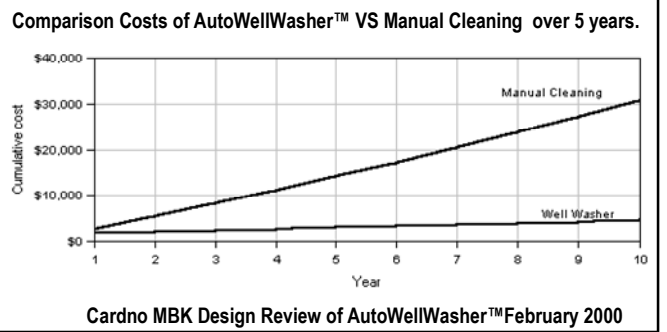
●When the AutoWellWasher™ is installed in a Council's problem pump stations, the benefits can be observed throughout the entire sewerage network right back to the treatment plant.

●If you do the sums, other cleaning methods just don't add up anymore, the AWW is a more efficient & economical way to achieve better results continuously. (see graph).

●We all know water is a precious commodity, as is the sewerage and wastewater infrastructure. A small outlay at the right time and place can save large outlays later and keep our communities clean, disease free and sewerage out of our streets and waterways.

*S.E. Queensland's recommended daily water usage of 200 litres per person per day @ Nov 2009.

Pump Station Cleaning the Easy and Economical Way Paper; ## Cardno MBK Design Review of AutoWellWasher™ Report Feb 2000.



"Installing a McBerns AutoWellWasher™ is like having a person permanently at your pump stations washing them daily!

A fast and economical solution to just one aspect of your maintenance tasks." THE AUTOWELLWASHER™ IS ALWAYS ON THE JOB!



McBerns Pty Ltd

PUMP STATION AND ODOUR MANAGEMENT

69 Running Creek Rd (PO Box 304) Yandina Qld Australia 4561

PH: 61 7 5446 7167 FAX: 61 7 5446 7162 EMAIL: mail@mcbarns.com

©McBerns Pty Ltd 2006 Updated 02/12/09

ABN 56 060 984 107

www.mcbarns.com